

DAVY'S

Lawnmower & Tool Hire

Behy Road, Ballina, Co, Mayo

Tel: 096 77989/76537 / 77000 Fax: 096 78770

Mobile: 087 6378711

Web: www.davystoolhire.com email: info@davystoolhire.com

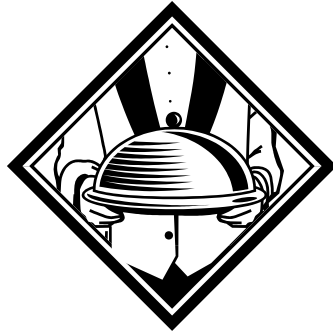
Hire
Sales
Service
Repairs
Mixers
Compressors
Saws
Mini-Diggers
Pumps

Teleporters
Hoists
Cherry pickers
Rough Terrain Lifts 1
OOKVA Generators
Rollers Dumpers
Traffic Lights
Scaffolding
Lawnmowers

Opening Hours: Monday - Saturday: 8am - 8pm
Sunday: 1 0.30am - 6pm

Gordon's Country Catering

Contact Michael 087 2724387



Ardagh Community Players

The Cripple of Inishmaan

By

Martin McDonagh

Ardagh

Community Centre

Fri 4th, Sat 5th & Sun 6th

FEBRUARY 2011

Director: Michael Flanagan
Michael volunteered last autumn to direct the group having worked with the group for the last eight years.



MC: Rebecca Daly

Stage Manager: Dymphna McAndrew

Stage Crew: John O'Hora
Noel Mc Andrew
Gerry Mc Andrew
Brendan Ruttledge
Seamus Reddington

Prompters: Pauline Timmons
Josephine Gillespie

Set Design: Seamus Reddington

Sound: Con Rooney

Lighting: Padraic Traynor

Programme: Dymphna McAndrew

Bookings & Door: Breege Kelly & Vincent Clarke

Thanks to all those who gave props, David Farrell (Western People) & Eamonn O'Boyle (Poster design) for the photography and anybody who helped bring this production to fruition.

CARR'S

Independent Supermarkets & Off License

Lord Edward Street & Crossmolina Road,
Ballina, Co. Mayo
Tel.: 096 21427 /73712

Hineys of Crossmolina

Supermarket, Newsagents, Lounge
Bar

The Upper Deck

For the Best in Live Bands and
Entertainment

Phone: 096 31202

THE CRIPPLE OF INISHMAAN

The Cripple of Inishmaan, is by award winning playwright Martin McDonagh. It's set on the small Aran Island community of Inishmaan, in the 1930's. The islanders just learn that a Hollywood film crew have arrived in the neighbouring island of Inishmore to make a documentary about life on the islands.

The documentary provides the island's gossip, Johnnypateenmike (Tommy Kilroy) with a real scoop and this makes a change from looking after his drunken mammy (Mary Martyn). The island's young inhabitants, Slippy Helen (Eilish O'Brien) and her brother Bartley (Michael Murphy) are determined to be part of the action. Even "Cripple" Billy Claven (Alan Moran), is eager to escape Inishmaan unknown to his "aunties" Kate (Dolores O'Boyle) and Eileen (Joan Ruttledge)

These islanders are not afraid to rearrange some facts. For example, Billy finds his own facts to persuade Babbybobby (Seamus Barrett) to take him on his boat. As far as the local Doctor (Sean Doherty) is concerned, there is nothing the matter with Billy Claven.

As we follow Billy's funny journey and its effect on the other islanders, we get to see what really happens on the island.

Brickdale Construction



Padraic Egan
096 71699

Donald O'Boyle
Plant Hire

Netley, Crossmolina, Co. Mayo
086 3139623

All Drainage and site work carried out
Dump Trailer and Road sweep Hire

HAIR CARE UNISEX SALON

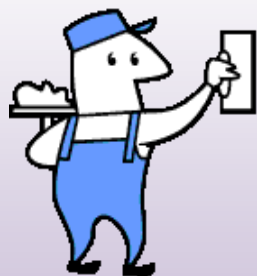
OVER FASHION SHOP, PEARSE ST.,
BALLINA.

"ALL STYLES CATERED FOR"

Prop.: Ann Cosgrave (Reynolds)
Telephone: (096) 21259.

Gerry Barrett

Ballina Plaster Mouldings



096 74130

Mickey O'Boyle



Local publican
096 22055

Killala Upholstery

Quay Road, Killala, Co. Mayo

We manufacture and sell direct to the public.
A range of 3 piece suites, couches, Queen Anne chairs, Tub
chairs, Headboards etc. Handmade to suit customer needs

We carry out all kinds of recovery work, Suites, Chairs,
Recliners, Footstools etc.
We sell all upholstery requirements, fabric, foam, webbing
etc., including a range of curtain fabrics.

Interior Design Service Available

Call: 096 32472 or Email : killalaupholstery@gmail.com

Opening hours: Mon – Fri 9am to 6pm Sat 9am - 12



Billy Claven: played by Alan Moran.
Billy is the local Cripple who yearns for a life outside the islands and its residents.



Bartley McCormack played by Michael Murphy
Poor Bartley just wants a simple life along with a telescope. However nothing is ever simple when you have Helen as a sister.

Auntie Kate played by Dolores O'Boyle.
Kate would do anything for her nephew Cripple Billy. But thank God for the stones, without them she just wouldn't cope.



Johnnypateenmike played by Tommy Kilroy
Johnnypateenmike likes nothing better than a bit of news and the bigger the piece of news the better. However you must be willing to pay to hear the news.



Auntie Eileen played by Joan Ruttledge
Eileen also would do anything for her nephew Cripple Billy. However, she won't tolerate his big words and attitude from the bright lights of Hollywood.



Babbybobby played by Seamus Barrett
Babbybobby is the local fisherman who provides transport to the young ones of the island, however this fisherman has a fierce temper.

Helen McCormack played by Eilish O'Brien
Helen is also known as Slippy Helen to the locals. The feisty girl will not take any nonsense from anyone on the island. A force to be reckoned with.



The Doctor & Mammy Played by Sean Doherty & Mary Martyn
No community is complete without a doctor and his doctor/patient confidentiality. While poor mammy is put under the test of the doctor under her son's instructions.



Hair by Jacqueline
Unit 6 Garden Court, Garden
Street Ballina
096 76860 / 086 3920725



The Junction Restaurant
Tone Street Ballina



Tel: 096 22149
Martin & Mariea Carr



Ocean Sands Hotel

Enniscrone
Co Sligo
Tel: 096 26700
Fax: 096 37513

Web: www.theoceansandshotel.ie
Email: sales@theoceansandshotel.ie

The Ocean Sands Hotel is the perfect place stay.

Great 2011 Offers – January – May

Winter Delight – January & February: 2 Adults – 2 Nights B&B from €25 pps,
only €50 for 2 nights

Mid Term Family Breaks – 2 Adults & 2 Kids – 2 Nights B&B plus 1 Dinner
from €240

Easter Family Breaks – 2 Adults & 2-3 Kids – 3 nights B&B plus 3 Dinners from
€350

Contact Reception @ 096 26700.

BOLAND MOTOR FACTORS

Unit 5, Mercy Road, Ballina, Co. Mayo.

Tel: 096 – 78484 / 096 – 78282

Fax: 096 - 75682

Contact Vincent 087 205 4487 or

Mark 087 294 1961

Stockist of top quality Replacement parts
Open 6 Days a Week 8am to 6pm

Scene 1 & 2 – Takes place in the Aunties Shop, where we learn about life on Inishmaan and about the film crew’s arrival to Inishmore.

Scene 3 – We are at the shore where Billy organises transport.

Scene 4 – We meet Johnnypateenmike’s mammy with all her “illnesses”.

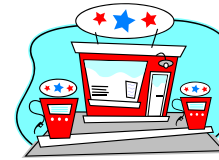
Scene 5 & 6 – We are brought back to the shop, here we learn what has truly happened and we see the fine mess!!!

Scene 7 – Here we see the true Billy in Hollywood.

Scene 8 – We meet the characters in the Church hall, truly the funniest scene of the night.

Scene 9 – We are back to the shop for what can be only described as a dramatic ending.

**Mulherns Filling Station
And Gala, Ballina St., Crossmolina
Tel: 096 30593 / Fax: 096 30594**



&

**Mulherns Builders Ltd., Mullenmore
Road, Crossmolina**

Tel: 096 31239 / 096 31386

Quinn’s Chemist



Bridge Street, Crossmolina

**For all your medicinal needs, also stocks a
wide range of Gifts and Jewellery**

Tel: 096 31241



Accounting and Book-keeping for Farmers, sole traders and small businesses.

Specialising in Farm Accounts and Finance

Also Suppliers of Computers and Software

Contact: Seamus on **096-22666 / 086-8181030**

e: wfs@iol.ie

Ardagh GAA

Clonkee Road, Ardagh, Co. Mayo

Please support your local GAA Club

Contact:

Ardagh Community Players productions to **Date**

- 2011** The Cripple of Inishmaan by Martin McDonagh
- 2010** Big Maggie by John B. Keane
- 2009** The Country Boy by John Murphy
- 2008** Swan Song by Kevin McGinty
- 2007** Moll by John B. Keane
- 2006** Wigs on the Green by Noel Marian
- 2005** Professor Tim by George Shiels
- 2004** Sharon's Grave by John B. Keane